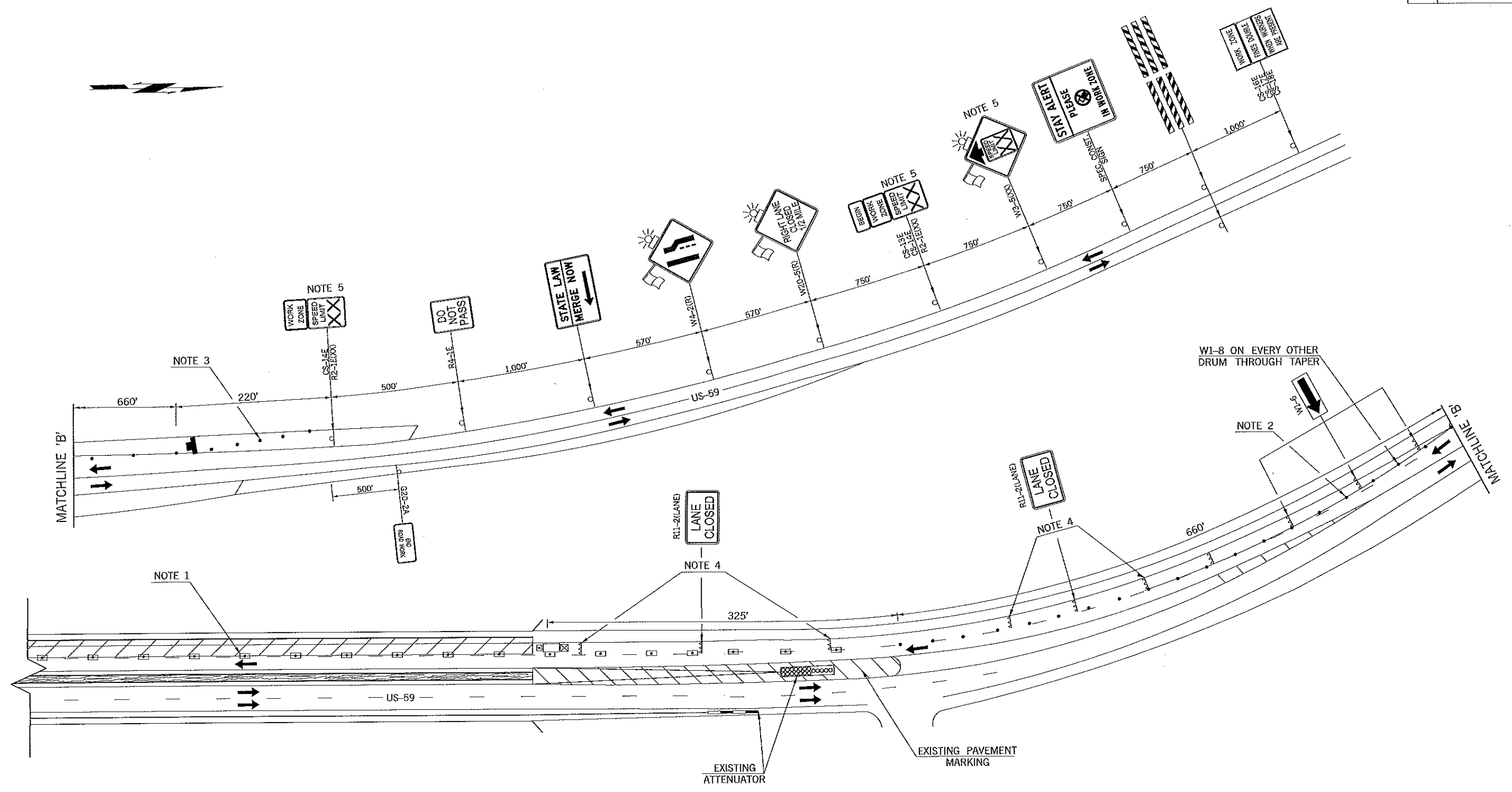


REV. NO.	DESCRIPTION	REVISIONS	DATE



NOTE 1
 MAXIMUM SPACING BETWEEN CHANNELIZING DEVICES (FEET) SHALL BE EQUAL TO TWICE THE POSTED SPEED LIMIT (M.P.H.) WITH THE FOLLOWING EXCEPTIONS. SPACING SHALL NOT EXCEED 50 FEET FOR CONES OR TUBE CHANNELIZERS. SPACING SHALL NOT EXCEED 75 FEET FOR CHANNELIZER CONES. SPACING SHALL NOT EXCEED 100 FEET FOR TYPE II BARRICADES, VERTICAL PANELS OR DRUMS.

NOTE 2
 MAXIMUM SPACING BETWEEN CHANNELIZING DEVICES (FEET) SHALL BE EQUAL TO THE POSTED SPEED LIMIT (M.P.H.) WITH THE FOLLOWING EXCEPTIONS. SPACING SHALL NOT EXCEED 25 FEET FOR CONES OR TUBE CHANNELIZERS; IT SHALL NOT EXCEED 50 FEET FOR TYPE II BARRICADES, VERTICAL PANELS OR DRUMS.

NOTE 3
 A MINIMUM OF FIVE (5) CHANNELIZING DEVICES SHALL BE PLACED THRU THIS AREA.

NOTE 4
 A SUFFICIENT NUMBER OF TYPE III BARRICADES, WITH SIGNS AS SHOWN, SHALL BE USED TO COMPLETELY CLOSE THE ROADWAY TO TRAFFIC FROM THE EDGE OF PAVEMENT TO THE EDGE OF PAVEMENT.

NOTE 5
 CONSTRUCTION SPEED LIMIT TO BE DETERMINED BY THE DIVISION ENGINEER.

FOR INFORMATION REGARDING THE LENGTHS OF TAPERS, TANGENTS, AND CROSSOVERS, AS WELL AS THE SPACING OF CHANNELIZING DEVICES, SEE STANDARD DRAWING TCS2-1-(LATEST REVISION).

- KEY:**
- o- SIGN
 - DRUM
 - ▨ WORK AREA
 - ▲ ARROW DISPLAY
 - ▲▲▲ TYPE III BARRICADE
 - ☒ TRUCK MOUNTED ATTENUATOR

**TRAFFIC CONTROL DETAIL
 OUTSIDE LANE CLOSURE
 NORTH SIDE**

Drawn	RGN	4/16
Design	RGN	4/16
Checked	SB	4/16
TRAFFIC ENGINEERING JAMI L. SHORT		
STATE OF OKLAHOMA		DEPARTMENT OF TRANSPORTATION
DIVISION 6		STATE JOB NO. 30223(04)
		SHEET NO. 7A

US-59 DELAWARE COUNTY

DRAWING NOT TO SCALE